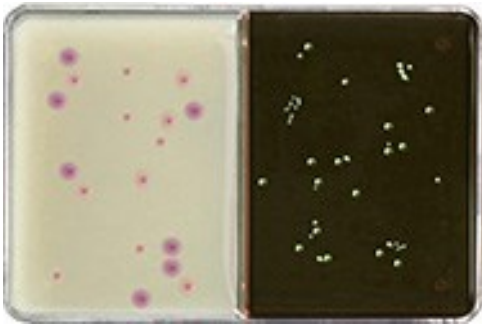




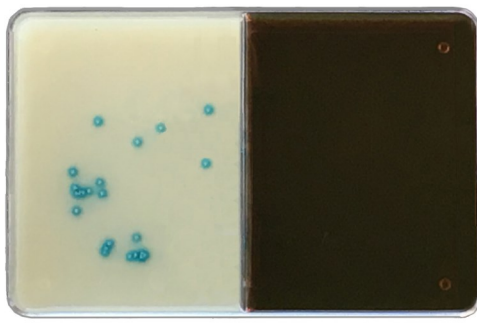
CultiPlate® – U Urine Culture System

Veterinary Interpretation Guide



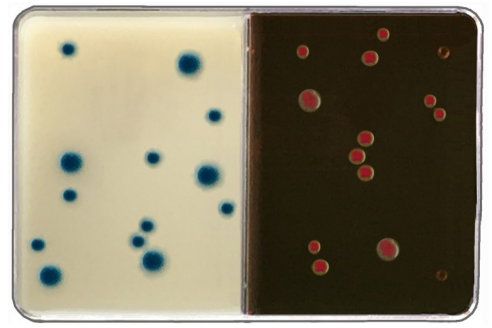
E. coli

Spectrum: Deep pink to red colonies often with purple center. EMB: Deep blue to black centered colonies. Green metallic sheen.



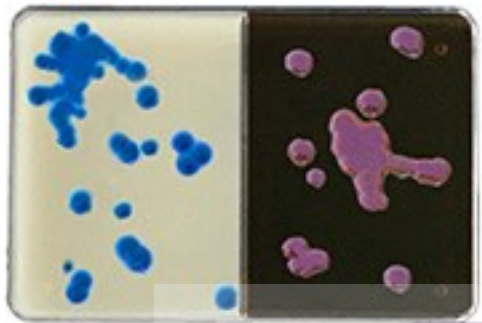
Enterococcus faecalis

Spectrum: Small, turquoise to dark blue colonies. EMB: No growth or occasional pink pinpoint growth.



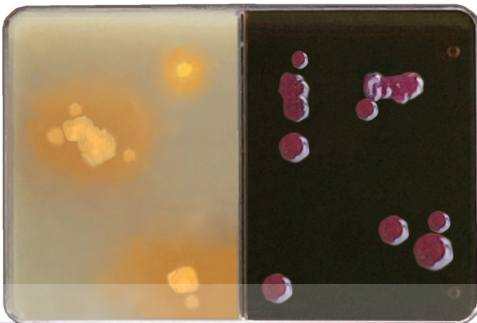
Enterobacter spp.

Spectrum: Large blue to greenish-blue colonies. Pink halo occasionally seen with older cultures. EMB: Large pink colonies.



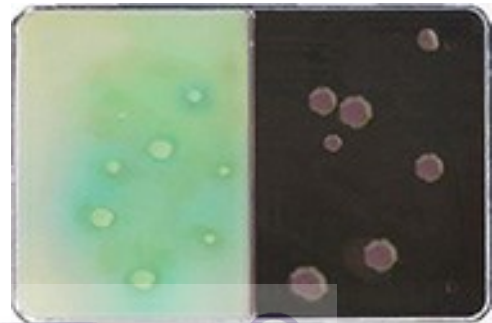
Klebsiella spp.

Spectrum: Large blue to greenish blue mucoid colonies. EMB: Large, pink to light purple mucoid colonies.



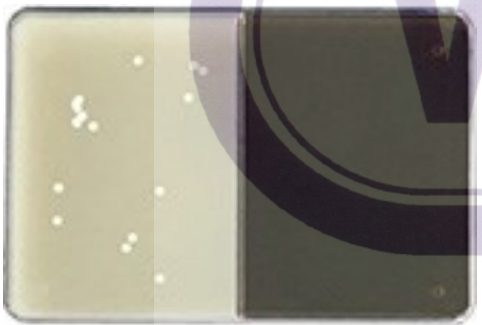
Proteus mirabilis

Spectrum: Swarming beige to orange irregular colonies surrounded by diffusing brown pigment. EMB: Pink swarming confluent growth.



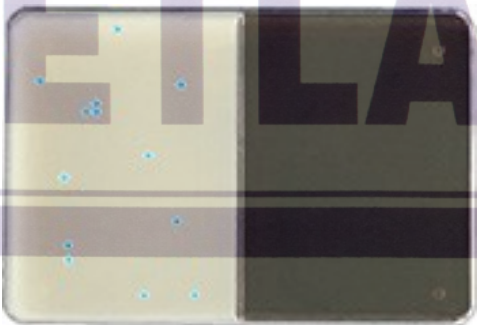
Pseudomonas aeruginosa

Spectrum: White to light green, flat colonies with serrated edge surrounded by diffusing green pigment. EMB: Pink-tinged, flat spreading colonies with rough edges.



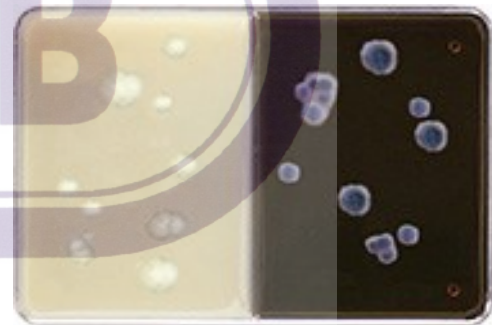
Staphylococcus aureus

Spectrum: Opaque white colonies. Some species may be slightly mauve-tinged. EMB: No growth or sparse pink pinpoint growth.



Group B Streptococcus

Spectrum: Pinpoint blue colonies. EMB: No growth. Note: Differentiation of Streptococcal species requires ancillary testing.



Yeast

Spectrum: White, creamy, convex colonies. EMB: Deep pink to purple spreading colonies. Budding cells evident in freshly prepared smears.

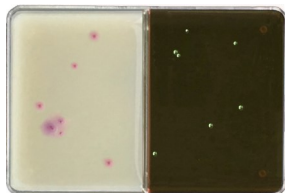
How to Perform a Colony Count

Following inoculation with the 10 ul calibrated loop and incubation, count the colonies on the side of the plate with the greatest number. Multiply by 100 to determine CFU/ml (Colony Forming Units). For cystocentesis samples, counts ≥ 1000 CFU/ml indicate UTI. For catheterized samples $\geq 10,000$ CFU/ml are significant except female dogs with $\geq 100,000$ CFU/ml. See package insert for detailed instructions and interpretation.



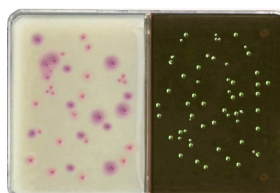
100 CFU/ml

Most likely contaminant.



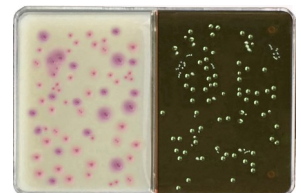
100-1000 CFU/ml

Possible UTI.



1000-10,000 CFU/ml

Cystocentesis sample:
UTI likely.



10,000 CFU/ml

Catheterized sample: UTI
likely (except female dogs).

Note: All organisms pictured were grown in pure culture. Mixed cultures should be interpreted with caution. CultiPlate®-U is intended as an aid to identification of urinary pathogens for which the system has been validated. Positive results should be submitted to a qualified laboratory for confirmation and susceptibility testing. CultiPlate®-U is for veterinary use only.



Vetlab Supply
Palmetto Bay, FL 33157
800-330-1522 • 305-232-8421 Fax
www.vetlab.com