

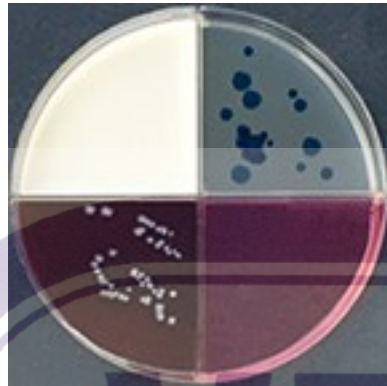
Spectrum CS™/Spectrum IV™

Culture and Sensitivity System

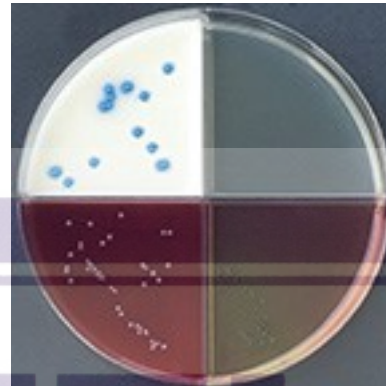
Veterinary Interpretation Guide



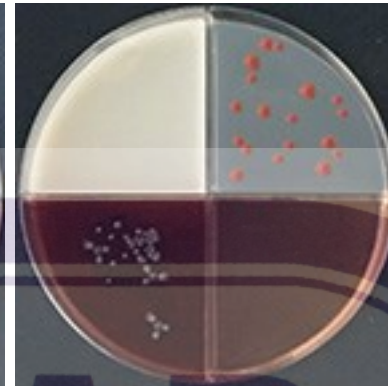
Spectrum IV plate showing Gram + and Gram - chromogenic agars, Staphylococcus Select, and TSA/5% Blood agar.



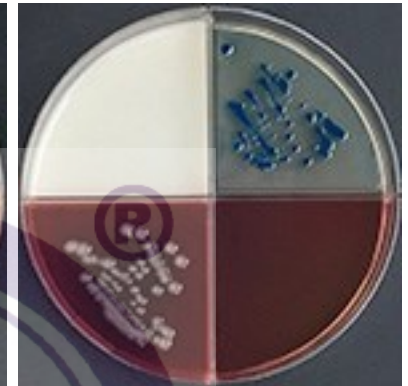
Enterobacter spp: Large metallic blue colonies. May be surrounded by slight pink halo after extended incubation.



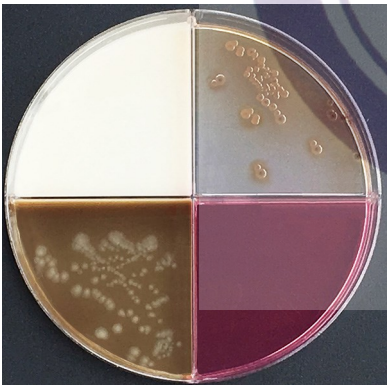
Enterococcus: Turquoise to blue small colonies. Some species may produce black colonies on SS agar with or without yellow background.



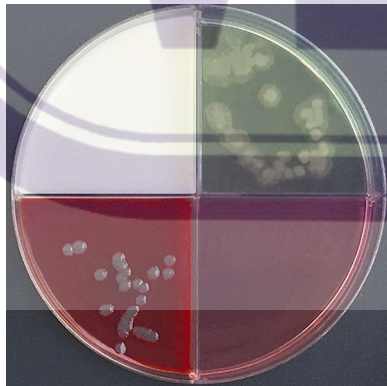
E. coli: Medium to large deep pink colonies. Some species may produce black colonies on SS agar with no media color change.



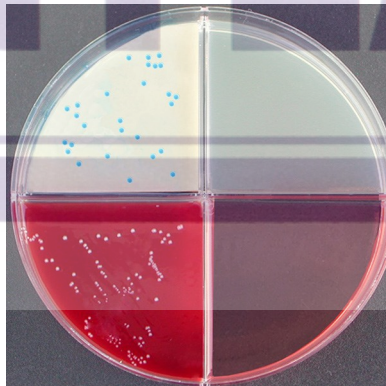
Klebsiella pneumoniae: Large, metallic blue mucoid colonies. Some may produce black colonies on SS agar with no color change.



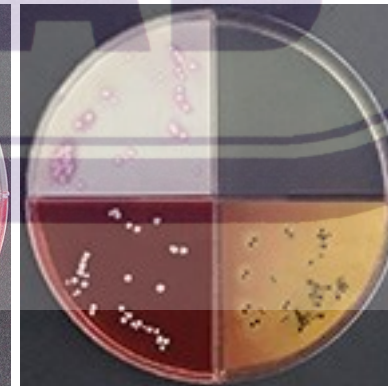
Proteus mirabilis: Slightly orange colonies surrounded by brown pigment. TSA/Blood: Gray mucoïd swarming growth with diffusing brown pigment



Pseudomonas aeruginosa: White to slightly green serrated colonies with some diffusion of green pigment into media.



Grp. B Streptococcus: Light blue pinpoint colonies. TSA/Blood: Pinpoint colonies w/clear zone of beta hemolysis. Some species non-hemolytic.



Staphylococcus aureus: Mauve to white colonies. Some species very light yellow. SS: Black colonies surrounded by yellow media.



Candida albicans (Yeast): Medium flat mauve colonies. May grow on all quadrants after 24-48 hr. incubation. Gram stain for large budding cells.

Note: All organisms shown have been grown in pure culture. Mixed cultures should be interpreted with caution. The Spectrum CS Culture System and Spectrum-IV plate are for veterinary use only and is intended as an aid to the identification of certain common pathogens. Presumptive results should be verified using traditional culture methods.

Reorder from:
Vetlab Supply (800)3301522
Spectrum CS Culture System
Product # MCR-PLTSP500
Product # MCR-PLTSP500Q (Spectrum IV plate only)